

**We protect electronics!**

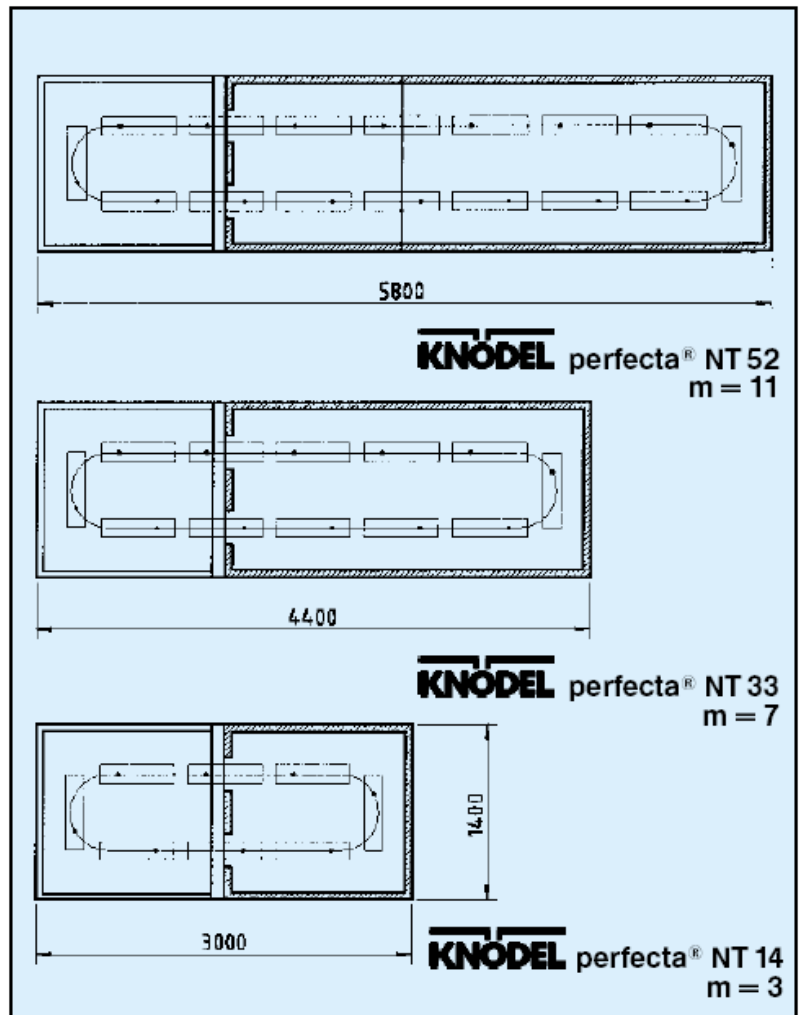


## **KNÖDEL perfecta® NT**

**Protective coating lines for the coating  
of electronic assemblies in quantity**

## KNÖDEL perfecta® NT

The KNÖDEL perfecta® NT is a versatile machine programme, engineered in modules. It is primarily used for dip coating of complicated assembly geometries. The assemblies are passed through dip section, and the evaporation, drying and cooling sections by using specific assembly fixtures. A dip programme allows the adjustment of individual parameters, such as dipping, withdrawal and tilting. Different assembly geometries can be processed at random without changing the machine settings. The majority of the applications is covered by 3 standard machines. The machines differ only in dryer length. The dryer length determines the throughput of coated assemblies.

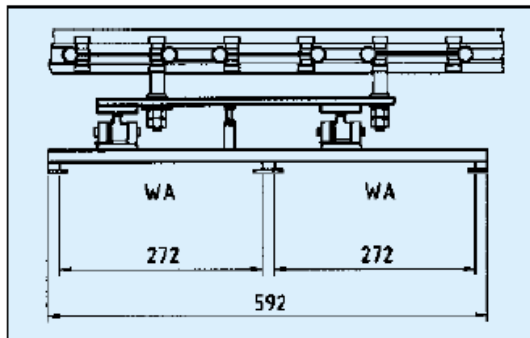


### Throughput calculation:

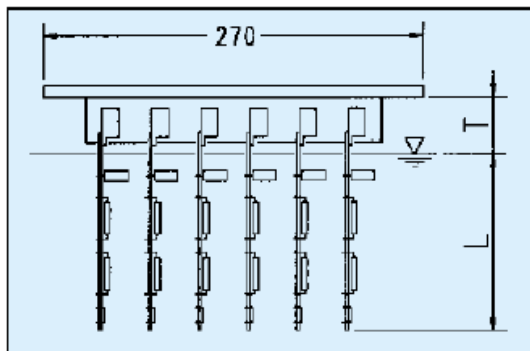
$$D_{NT} = 120 \text{ m/z} \cdot n \text{ [Baugr./h]}, \text{ [ass./h]}$$

n = Assembly fixture load

z = Drying time



The conveying system. Each carries 2 fixtures.

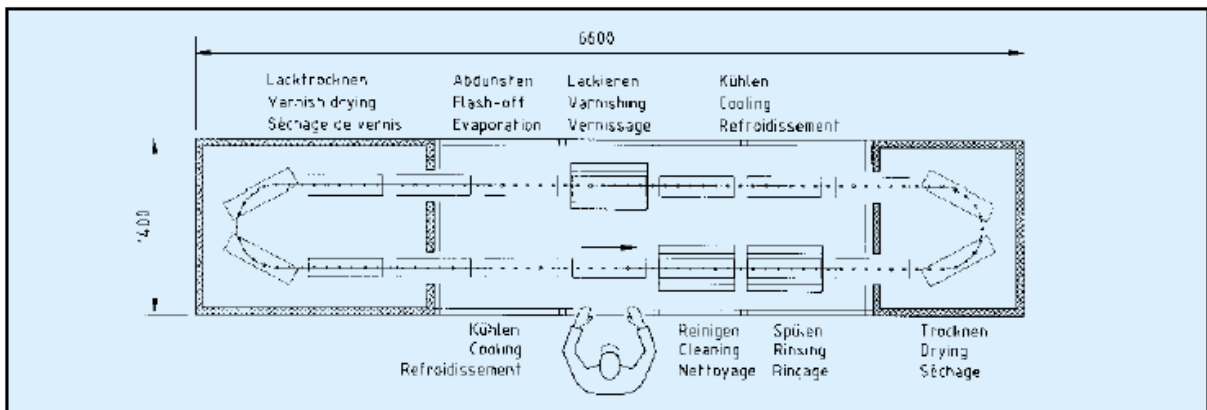


The fixture. Each holds n number of assemblies.



Service opening,  
protected by light screen.

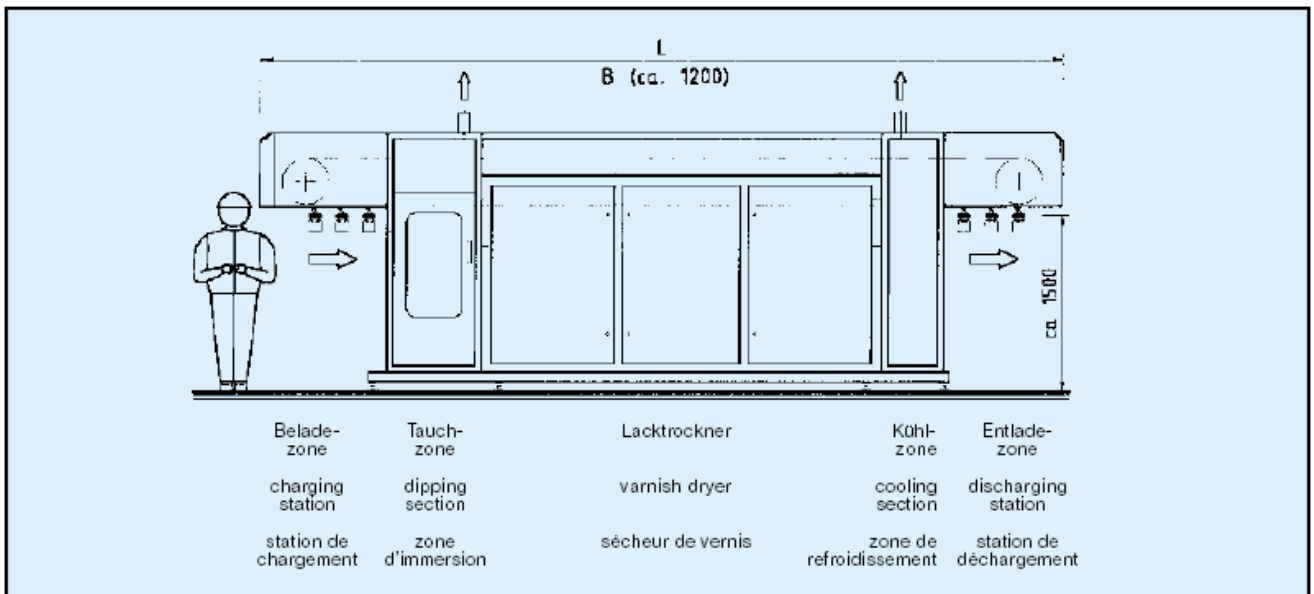
View onto ventilating system  
(in opened varnish dryer).



The modular KNÖDEL perfecta® NT machine system is suitable for a variety of plant combinations, such as the one shown for aqueous cleaning and conformal coating using water-based varnishes.

## KNÖDEL perfecta® online

This machine can universally be used for different assembly geometries just like KNÖDEL perfecta® NT. Characteristic design features are comparable with the perfecta. The main difference is, however, the need of two operators.



## GTL KNÖDEL GMBH

Postfach 13 10, D-71203 Leonberg  
Hertichstr. 81, D-71229 Leonberg  
Tel. +49 (0) 71 52 - 97 45-3  
Fax +49 (0) 71 52 - 97 45-50  
eMail [gtlknoedel@t-online.de](mailto:gtlknoedel@t-online.de)  
[www.knoedel-online.de](http://www.knoedel-online.de)