

# CYBERCLEAN<sup>®</sup>

## 6000 SERIES Model 6001 Aqueous Batch Cleaner



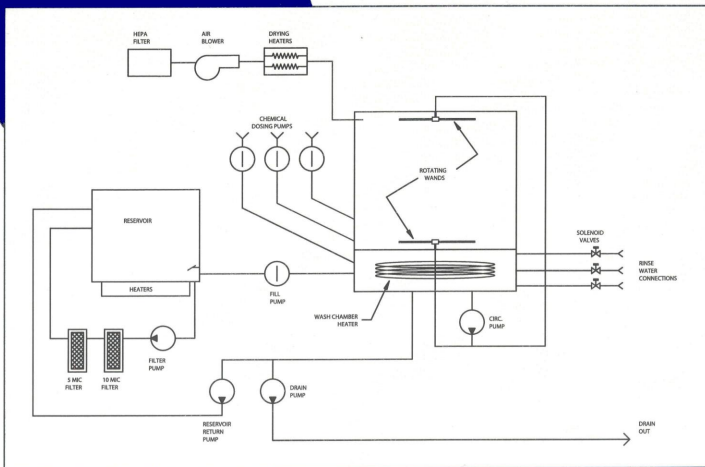
### **STANDARD FEATURES**

- Microprocessor Controlled*
- High Grade Stainless Steel Cleaning Chamber*
- Over 60 Programmable Recipes*
- Closed Loop Wash System*
- High Volume, Low Pressure Spray Wands*

[www.emcgti.com](http://www.emcgti.com)



# FLOW DIAGRAM



**EMC Global Technologies, Inc.**

**Corporate Headquarters**  
4059 Skyron Drive  
Doylestown, PA 18902  
USA

Ph: 215-340-0650  
Fax: 215-340-1737

[www.emcgti.com](http://www.emcgti.com)



*Miele Professional product enhanced  
by EMC Global Technologies, Inc.  
for use in the electronics industry.*