

CYBERCLEAN®

1000 SERIES

FOR CHEMISTRIES NOT REQUIRING A RINSE

The CYBERCLEAN® 1000 Series is run exclusively on compressed air and is available in various sizes and types.

FEATURES:

- Patented hydronically-driven spray system providing pulsating *high-volume, low-pressure* spray.
- Ergonomic front-loading design
- Single button activation
- Single Reservoir
- Stainless Steel plumbing & tanks

OPTIONS:

- *Separate filtration loop*
- *Closed loop exhaust*
- *Semi-automatic pump-out*

Basic Models are built in a compact footprint with cleaning chamber sizes of 16", 24", 32", & 40" square.



ASK US ABOUT OUR CUSTOM CLEANING EQUIPMENT!



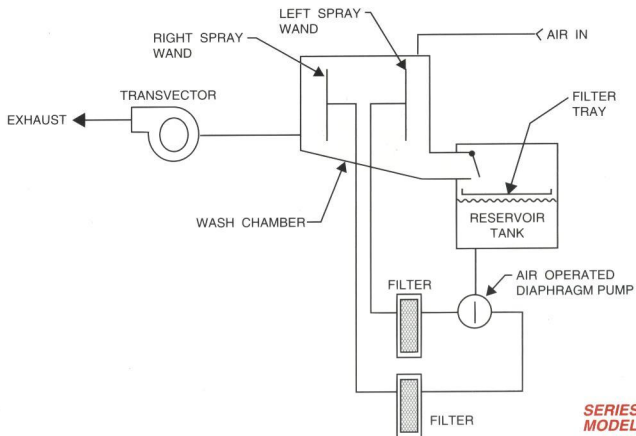
EMC Global Technologies, Inc.

Corporate Headquarters:

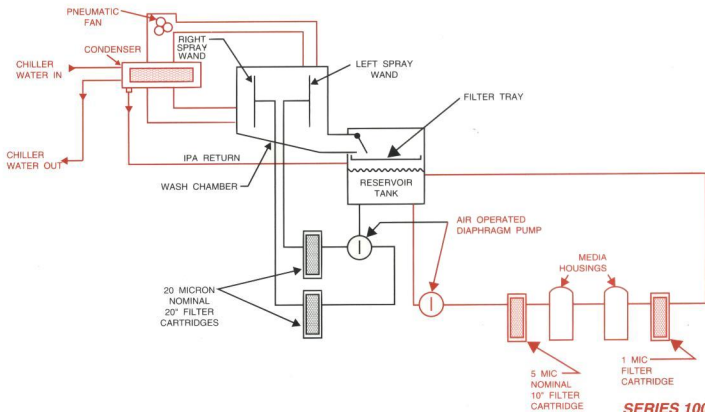
4059 Skyron Drive
Doylestown, PA 18902
Phone: (215) 340-0650
Fax: (215) 340-1737

www.emcgti.com

Designing and Building Tomorrow's Technology Today!



**SERIES 1000
MODEL 32P**



**SERIES 1000
MODEL 32PC
W/OPTIONS**